

Notes

- LEGEND**
- Study Area Outline —
 - Corridor 1 —
 - Corridor 1A —
 - Corridor 2 —
 - Corridor 2A —
 - Corridor 2B —
 - Corridor 3 —
 - Corridor 4 —
 - Waste Water Treatment Plant ○
 - Schools ■
 - Church †
 - Graveyard □
 - Community Hall □
 - Sports Ground ■
 - Tourism Related Structures ○
 - Communication Mast Ⓜ
 - Strokestown Development Plan ▨
 - Planning □
 - Townlands □



ROSCOMMON COUNTY COUNCIL

Courthouse,
Roscommon.
Phone: 090-6637100

Majella Hunt
Director of Services

NATIONAL ROADS DESIGN OFFICE ROSCOMMON

Racecourse Rd.
Roscommon.
Phone: 090 6627004

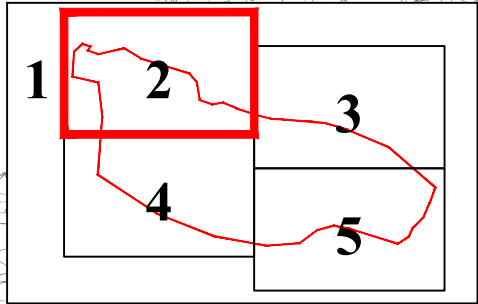
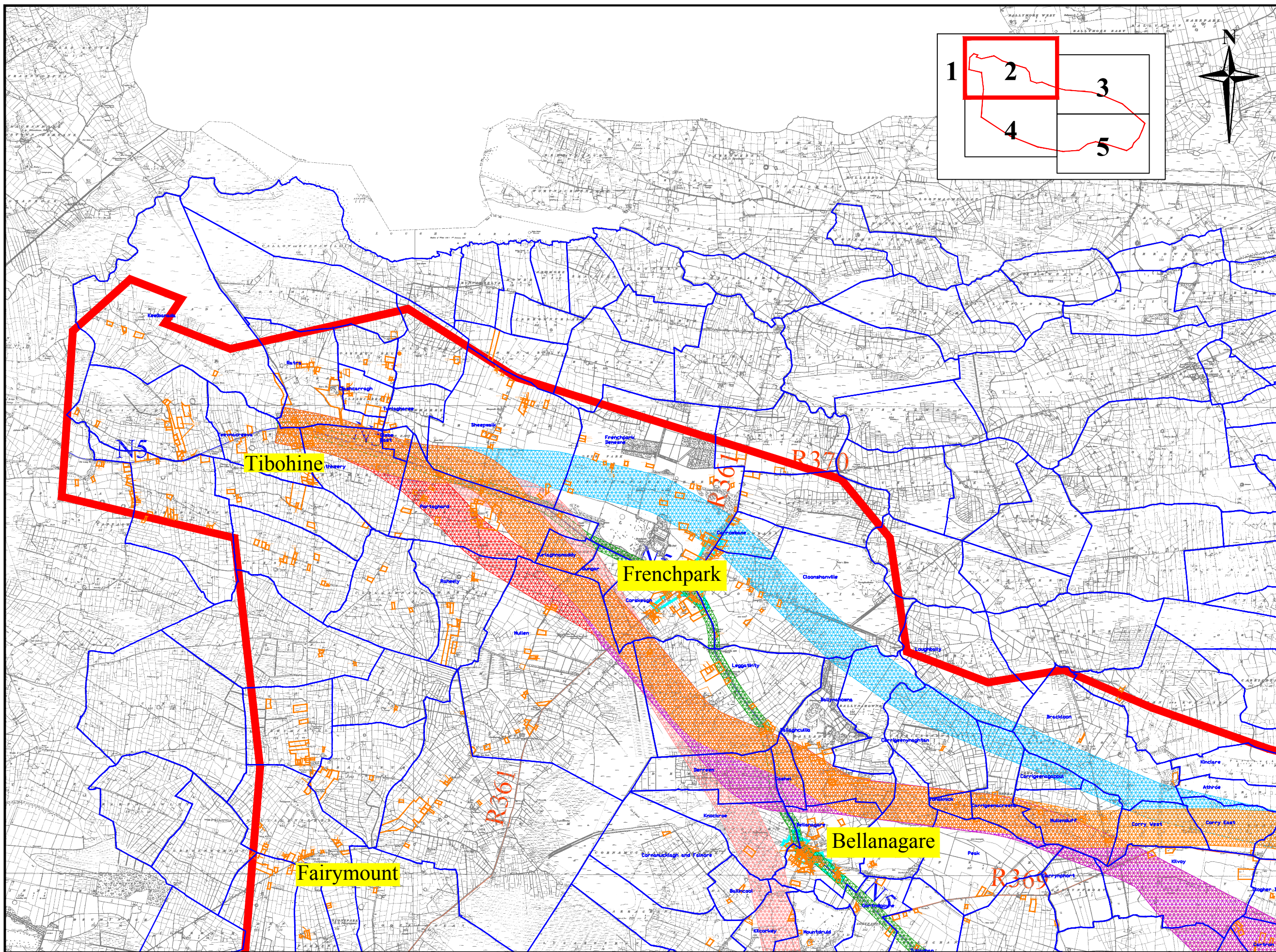
Martin Curley, B.E., CEng.,
Senior Engineer.

| Rev | Description | Checked | Approved | Date |
|-----|------------------|---------|----------|----------|
| 1 | Post Peer Review | | | 28/02/08 |
| | | | | |
| | | | | |

Project No. & Desc. **RN04250 N5 Strategic Corridor - Route Corridor Selection**

Drawing Title **Planning & Sensitive Structures Constraints**

| | | |
|--|------------------------------------|----------------------------|
| File Folder P:\Proj2004\1155\1155-12-362\DOCS\01 - RSR Drawings\010 December 2007\RN04250-12-362\Planning\Sensitive Structures.dwg | Drawing No.: RN04250-12-362 | Layout 1 of 5 |
| Drawn Patrick Flynn | Scale V N/A | Date September 2007 |
| | Scale H 1:100000 | |



Notes

LEGEND

- Study Area Outline —
- Corridor 1 —
- Corridor 1A —
- Corridor 2 —
- Corridor 2A —
- Corridor 2B —
- Corridor 3 —
- Corridor 4 —
- Waste Water Treatment Plant ○
- Schools ■ Sch
- Church †
- Graveyard □
- Community Hall □
- Sports Ground ■ GAA
- Tourism Related Structures ○
- Communication Mast ○ M
- Strokestown Development Plan ▨
- Planning □
- Townlands □

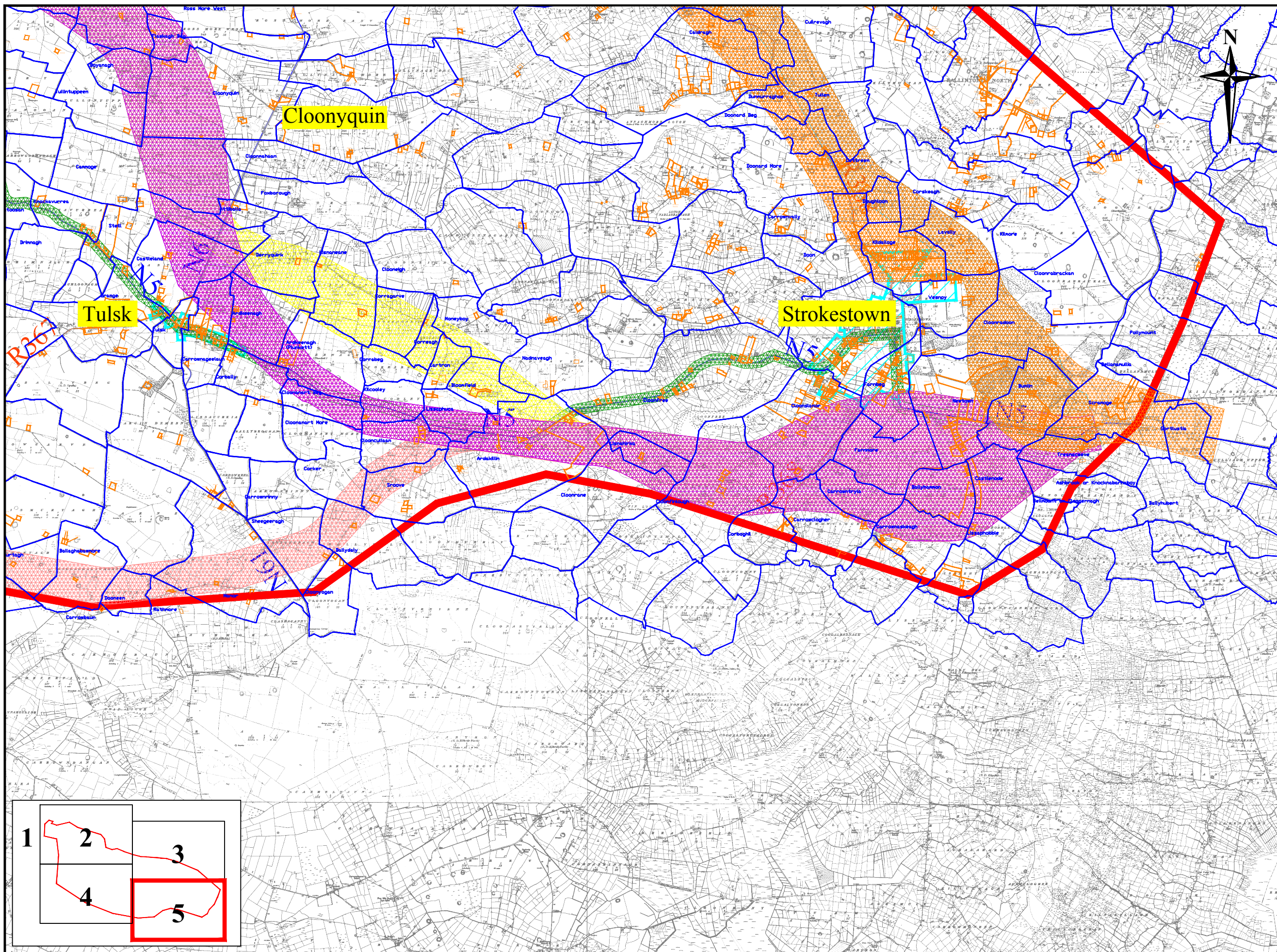


ROSCOMMON COUNTY COUNCIL
 Courthouse, Roscommon. Phone: 090-6637100
 Majella Hunt, Director of Services

NATIONAL ROADS DESIGN OFFICE ROSCOMMON
 Racecourse Rd. Roscommon. Phone: 090 6627004
 Martin Curley, B.E., CEng., Senior Engineer.

| Rev | Description | Checked | Approved | Date |
|-----|------------------|---------|----------|----------|
| 1 | Post Peer Review | | | 28/02/08 |
| | | | | |
| | | | | |

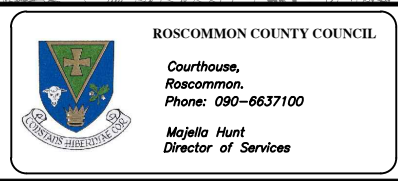
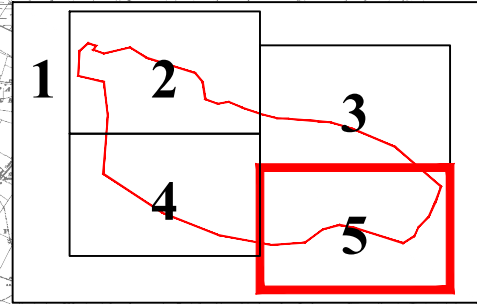
| | | | |
|--|--------------------------------|--|------------------------|
| Project No. & Desc. RN04250 N5 Strategic Corridor - Route Corridor Selection | | Drawing Title Planning & Sensitive Structures Constraints | |
| File Folder P:\Proj\2004\115\115115-13\REC\DOCS\01 - RSR Drawings\010 December 2007\RN04250-12-362\Planning\Sensitive Structures.dwg | Drawing No.: RN04250-12-362 | Layout 2 of 5 | Date September 2007 |
| Drawn Patrick Flynn | Scale V N/A | Scale H 1:20,000 | |



Notes

LEGEND

- Study Area Outline
- Corridor 1
- Corridor 1A
- Corridor 2
- Corridor 2A
- Corridor 2B
- Corridor 3
- Corridor 4
- Waste Water Treatment Plant
- Schools
- Church
- Graveyard
- Community Hall
- Sports Ground
- Tourism Related Structures
- Communication Mast
- Strokestown Development Plan
- Planning
- Townlands



| Rev | Description | Checked | Approved | Date |
|-----|------------------|---------|----------|----------|
| 1 | Post Peer Review | | | 28/02/08 |
| | | | | |
| | | | | |

| | |
|--|--------------------------------|
| Project No. & Desc. RN04250 N5 Strategic Corridor - Route Corridor Selection | |
| Drawing Title Planning & Sensitive Structures Constraints | |
| File Folder P:\Proj2004\14155\14155-13\REC\DOCS\01 - RSR Drawings\010 December 2007\RN04250-12-362\Planning\Sensitive Structures.dwg | Drawing No.: RN04250-12-362 |
| Drawn Patrick Flynn | Layout 5 of 5 |
| Scale V 1:20,000 | Date September 2007 |